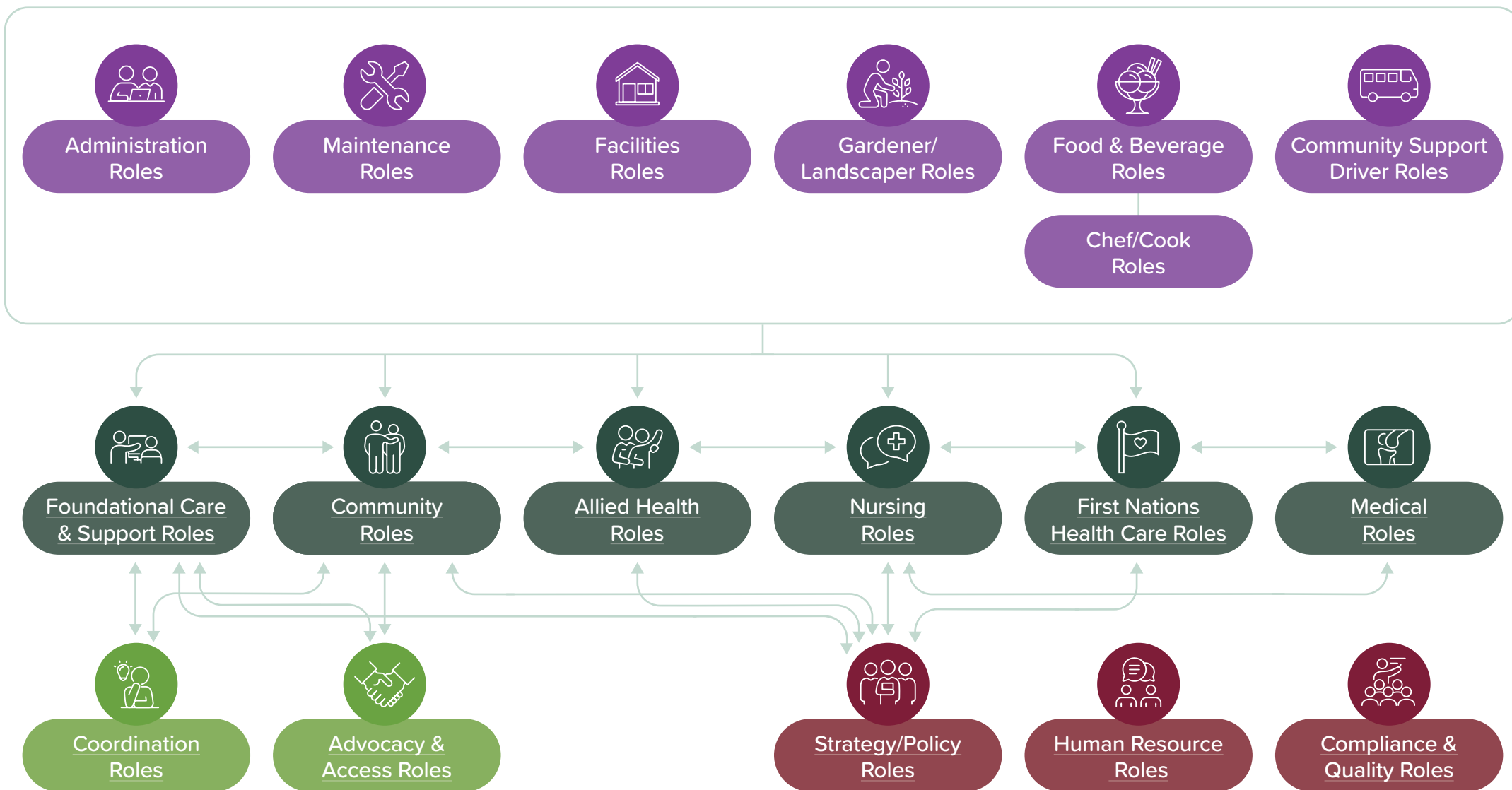


Career Framework Map: Aged care, disability support and veterans' care



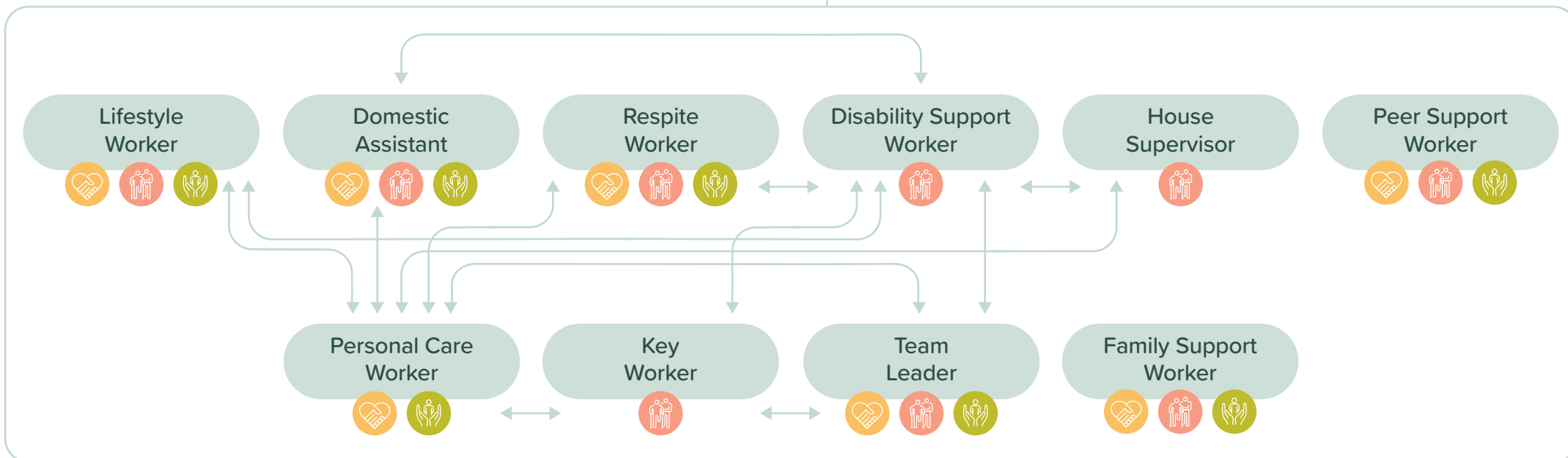
Indirect support
 Direct care & support
 Service navigation
 Service enablement

For more information about the roles within the Framework [click here](#)

Roles within the Framework



Foundational Care & Support Roles



Vocational education & training



Higher education



Aged Care



Disability Support Worker



Veterans' Care

Roles within the Framework



Community Roles

Community Worker



Alcohol & Other Drugs Worker



Education Support Worker



Mental Health Worker



Allied Health Roles

Allied Health Assistant



Dietitian



Occupational Therapist



Physiotherapist



Speech Therapist



Social Worker



Psychologist



Vocational education & training

Higher education



Aged Care



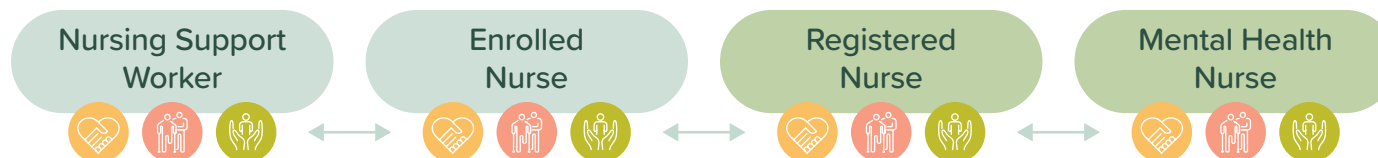
Disability Support Worker



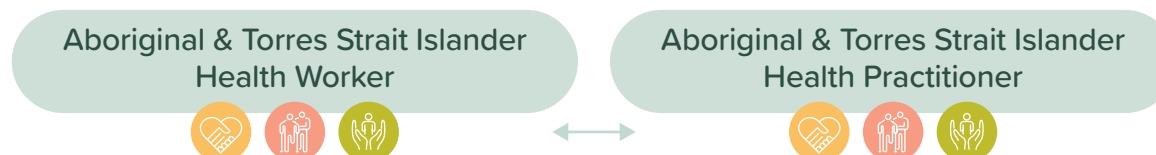
Veterans' Care

Roles within the Framework

Nursing Roles



First Nations Health Care Roles



Roles within the Framework



Medical Roles

General Practitioner



Psychiatrist



Coordination Roles

Transition Coordinator



Care Coordinator



Local area Coordinator



Support Coordinator



NDIS Planner



Vocational education & training

Higher education



Aged Care



Disability Support Worker



Veterans' Care

Roles within the Framework



Advocacy & Access Roles

Navigator



Employment Support Worker



Peer Navigator



Liaison Officer



Advocate



Auslan Interpreter



Aged Care Specialist Officer



Veteran Support Officer



Strategy/Policy Roles

Chief Executive Officer



Operations Manager



Policy & Research



Practice Improvement Lead



Vocational education & training

Higher education



Aged Care



Disability Support Worker



Veterans' Care

Roles within the Framework

HR Roles

Human Resources Manager



In House Trainer



Workforce Development



Compliance & Quality Roles

Compliance Officer



Complaints Manager



Quality Manager



Finance Manager



Vocational education & training

Higher education



Aged Care



Disability Support Worker



Veterans' Care